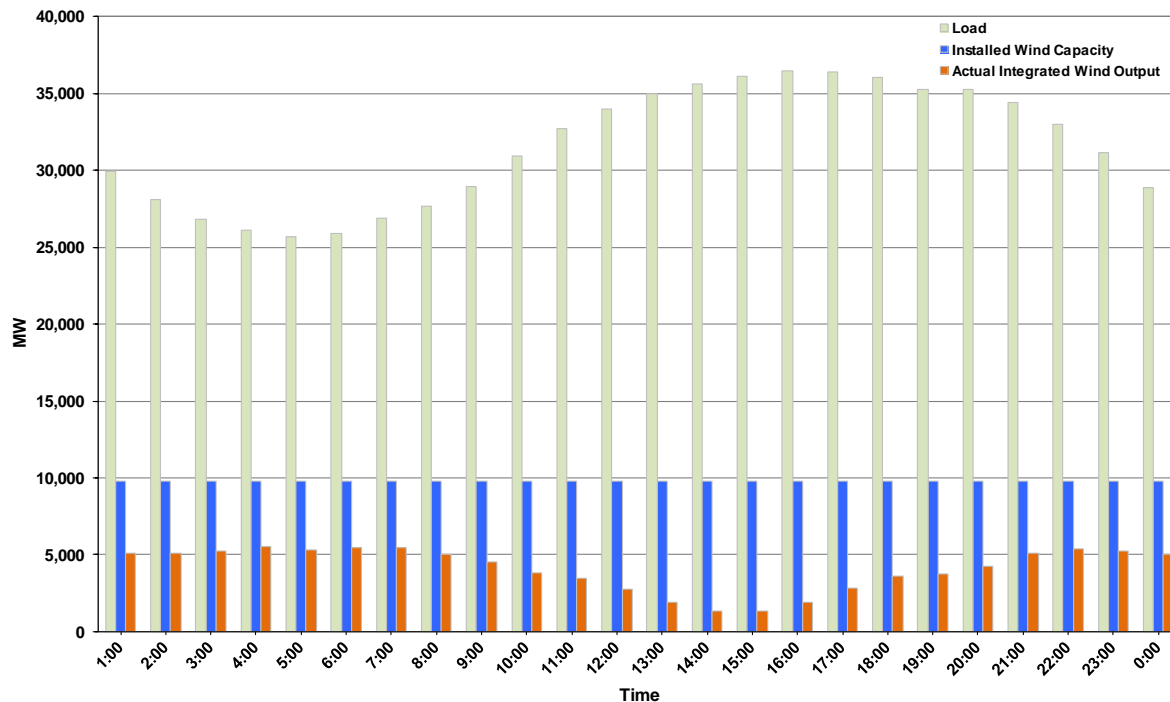




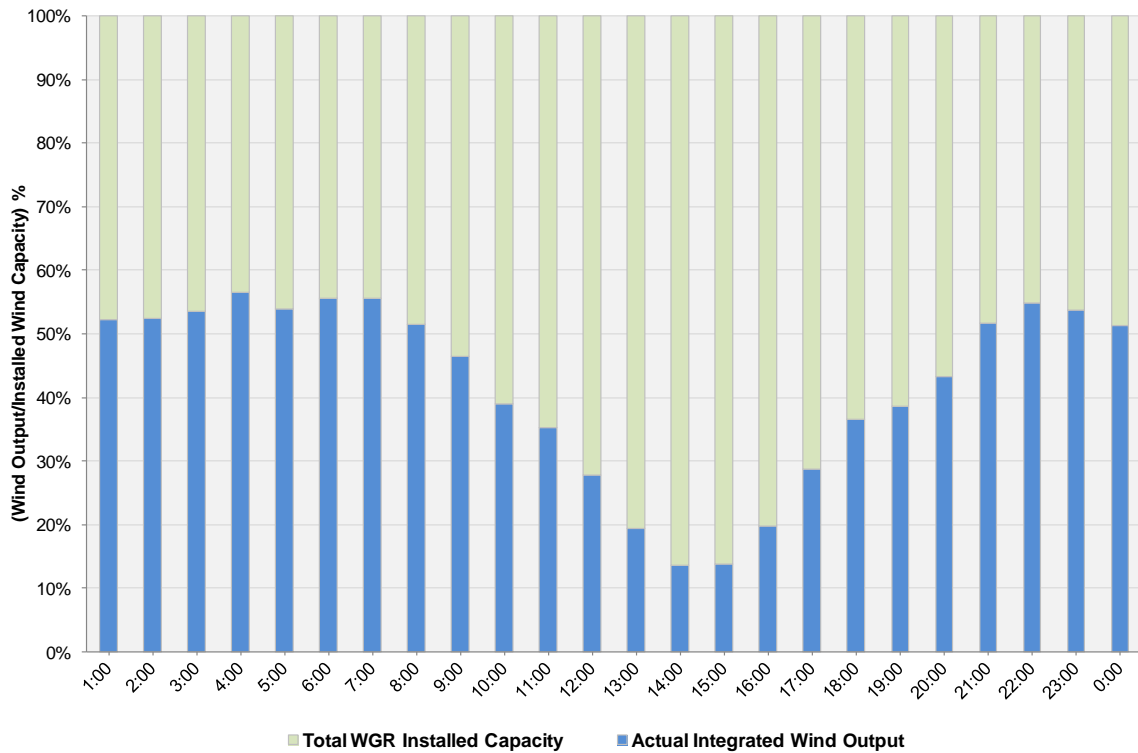
ERCOT Grid Operations Wind Integration Report: 10/06/2012

| | |
|----------------------|-----------|
| Peak Load | 36,446 MW |
| Load Peak Hour (HE) | 16 |
| Wind over Peak | 1,931 MW |
| Wind Record 06/19/12 | 8,368 MW |
| Max Wind Value | 5,732 MW |
| Wind Peak Time | 03:31 |
| Wind Integration % | 22.03% |

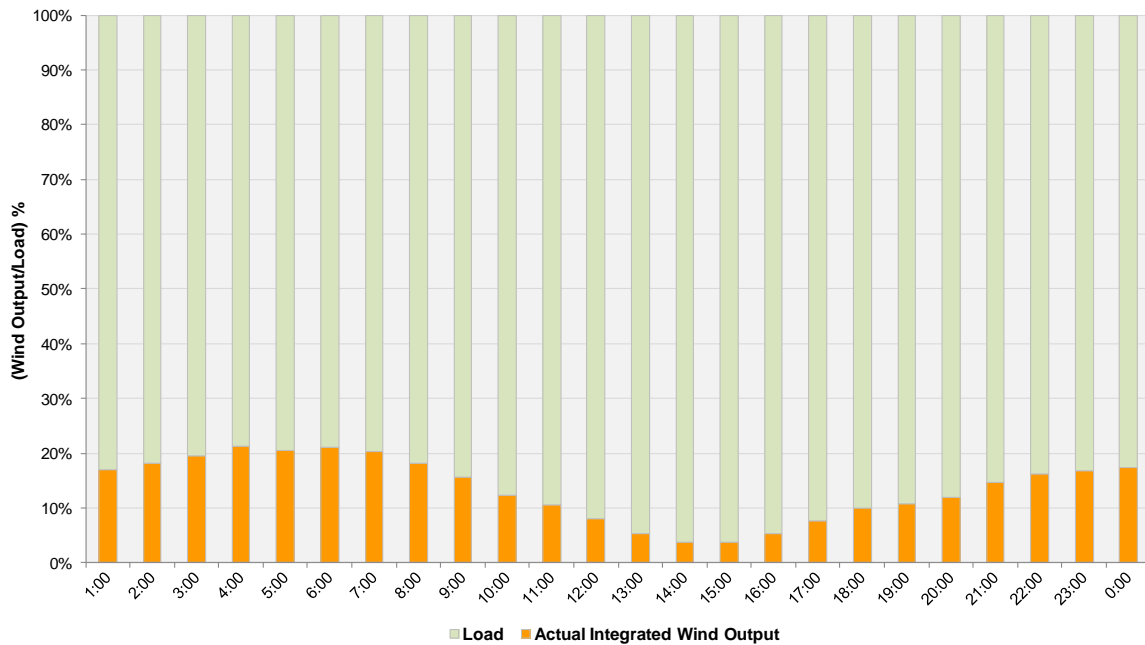
**Hourly Average Actual Load vs. Actual Wind Output
10-06-2012**



Actual Wind Output as a Percentage of the Total Installed Wind Capacity
10-06-2012



Actual Wind Output as a Percentage of the ERCOT Load
10-06-2012



ERCOT Load vs. Actual Wind Output 9/29/2012 - 10/6/2012

